

- Status Indicating LED on X4 Series
- IAC Module for 24 Vac Input Available (E suffix)
- UL, CSA, and CE

Solid state I/O switching modules deliver an electrically clean, photo-isolated, noise-free "output" interface from logic level control systems to external loads such as motors, valves, solenoids, etc. -- or an "input" interface from the load or sensors to microprocessor or computer-based logic level systems. Designed for long, reliable service in demanding industrial environments.

INPUT SPECIFICATIONS

| | IAC5 (S)MIAC5 X4IAC5 | IAC15 (S)MIAC15 X4IAC15 | IAC24 (S)MIAC24 X4IAC24 | IAC5A (S)MIAC5A X4IAC5A | IAC15A (S)MIAC15A X4IAC15A | IAC24A (S)MIAC24A X4IAC24A |
|--|----------------------------|-------------------------------|-------------------------------|-------------------------------|----------------------------------|----------------------------------|
| Nominal input voltage [Vrms/Vdc] | 120 | 120 | 120 | 240 | 240 | 240 |
| Minimum Input Voltage [Vrms/Vdc] | 90 | 90 | 90 | 180 | 180 | 180 |
| Maximum Input Voltage [Vrms/Vdc] | 140 | 140 | 140 | 280 | 280 | 280 |
| Maximum Input Current [mA rms] | 10 | 10 | 10 | 8 | 8 | 8 |
| Drop Out Current [mA rms] | 2.5 | 2.5 | 2.5 | 1.5 | 1.5 | 1.5 |
| Allowable Off-state Current [mA rms] | 3.0 | 3.0 | 3.0 | 2.0 | 2.0 | 2.0 |
| Allowable Off-state Voltage [Vrms/Vdc] | 50.0 | 50.0 | 50.0 | 120 | 120 | 120 |

OUTPUT SPECIFICATIONS

| | | | | | | |
|---|---------|-----------|-----------|---------|-----------|-----------|
| Nominal Logic Voltage [Vdc] | 5 | 15 | 24 | 5 | 15 | 24 |
| Minimum Logic Voltage [Vdc] (X4 Series) | 1.5 (3) | 8.5 (10) | 16.5 (18) | 1.5 (3) | 8.5 (10) | 16.5 (18) |
| Maximum Logic Voltage [Vdc] (X4 Series) | 6.0 (7) | 18.5 (20) | 30.5 (32) | 6.0 (7) | 18.5 (20) | 30.5 (32) |
| Typical Logic Supply Current [mAdc] | 10 | 10 | 10 | 10 | 10 | 10 |
| Max. Logic Supply Current [mAdc] | 18.5 | 16 | 14 | 18.5 | 16 | 14 |
| Max. Logic Sup. Leak. Current [µAdc] | 10 | 10 | 10 | 10 | 10 | 10 |
| Maximum Output Voltage [Vdc] | 30 | 30 | 30 | 30 | 30 | 30 |
| Maximum Output Current [mAdc] | 50 | 50 | 50 | 50 | 50 | 50 |
| Max. Output Leakage Current [µAdc] | 10 | 10 | 10 | 10 | 10 | 10 |
| Max. Output Voltage Drop [mVdc] | 200 | 200 | 200 | 200 | 200 | 200 |
| Maximum Turn-on Time [msec] | 20 | 20 | 20 | 20 | 20 | 20 |
| Maximum Turn-off Time [msec] | 30 | 30 | 30 | 30 | 30 | 30 |

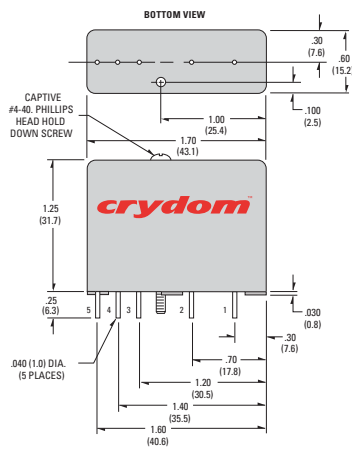
© 2007 CRYDOM Inc., Specifications subject to change without notice.

GENERAL SPECIFICATIONS

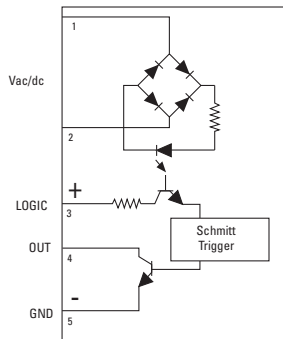
| | |
|-----------------------------|---------------|
| Operating temperature range | -30 to +80°C |
| Storage temperature range | -40 to +100°C |
| Isolation | 4,000 V rms |
| Capacitance input to output | 8 pF |
| Line frequency range | 47 to 63 Hz |
| Package Color | Yellow |

WIRING & MECHANICAL DIAGRAMS

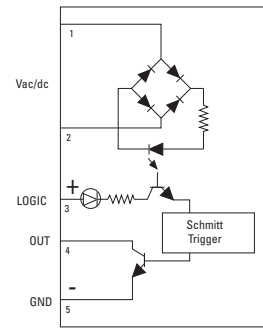
Standard Series, IAC



Standard and Mini Pack

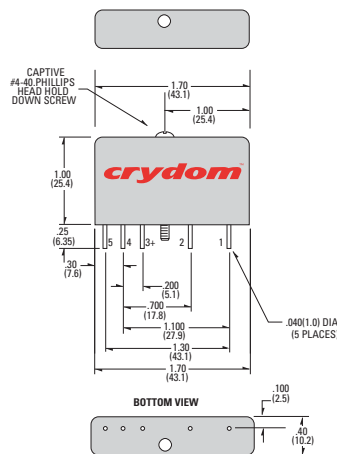


X4 Series

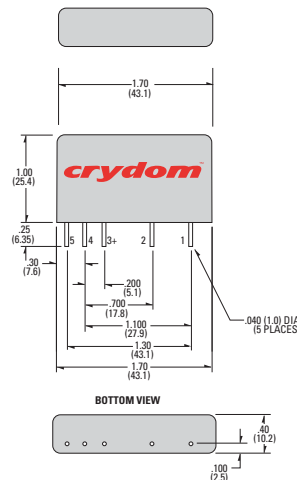


MINI-PACK Series, (S)MIAC

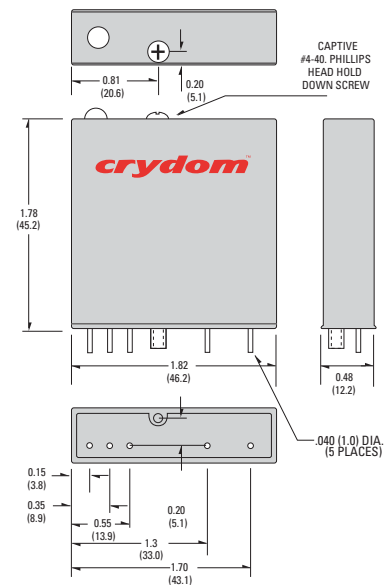
SM Prefix



M Prefix



X4 Series, X4IAC



APPLICATION NOTES

⚠ Do not install or remove modules in live (electrically hot) circuits. High voltage may be present.

⚠ An externally located commutating diode must be installed across inductive loads

⚠ I/O module boards also available

All dimensions are in inches (millimeters)

© 2007 CRYDOM Inc., Specifications subject to change without notice.

For recommended applications and more information contact:

USA: Sales Support (877) 502-5500 Tech Support (877) 702-7700 FAX (619) 710-8540

Crydom Inc., 2320 Paseo de las Americas, Ste. 201, San Diego, CA 92154

Email: sales@crydom.com WEB SITE: <http://www.crydom.com>

UK: +44 (0)1202 606030 • FAX +44 (0)1202 606035 Crydom SSR Ltd, Arena Business Centre,

Holyrood Close, Poole, Dorset BH17 7FJ, Email: intsales@crydom.com.

GERMANY: +49 (0)180 3000 506

ANNEX – ENVIRONMENTAL INFORMATION:

The environmental information disclosed in this annex including the EIP Pollution logo are in compliance with People's Republic of China Electronic Industry Standard SJ/T11364 – 2006, Marking for Control of Pollution Caused by Electronic Information Products.

| Part Name | Toxic or hazardous Substance and Elements | | | | | |
|-------------------|---|--------------|--------------|-------------------------------|--------------------------------|---------------------------------------|
| | Lead (Pb) | Mercury (Hg) | Cadmium (Cd) | Hexavalent Chromium (Cr (VI)) | Polybrominated biphenyls (PBB) | Polybrominated diphenyl ethers (PBDE) |
| Semiconductor die | X | O | O | O | O | O |
| Solder | X | O | O | O | O | O |

附件 - 环保信息:

此附件所标示的包括电子信息产品污染图标的环保信息符合中华人民共和国电子行业标准 **SJ/T11364 - 2006**, 电子信息产品污染控制标识要求

| 部件名称 | 有毒有害物质或元素 | | | | | |
|-------|-----------|--------|--------|---------------|------------|--------------|
| | 铅 (Pb) | 汞 (Hg) | 镉 (Cd) | 六价铬 (Cr (VI)) | 多溴联苯 (PBB) | 多溴二苯醚 (PBDE) |
| 半导体芯片 | X | O | O | O | O | O |
| 焊接点 | X | O | O | O | O | O |

